

LEVEL 2

TECHNICAL REQUIREMENTS

Students must prepare all the listed elements for their instrument on the level they are enrolled. Memorization is required. Elements may be played in any order.

THEORY REQUIREMENTS

The student should be able to write and recognize all elements of music in every category. The student is responsible for all theory, signs and terms, and ear-training from Level 1 through Level 2.

TONALITY

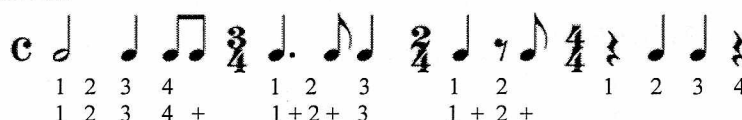
1. Staff notes with proper stem direction.
2. Distinguish between whole steps and half steps on the staff.
3. Scales and key signatures in Major: C, G, D, A, F, B \flat , E \flat
4. Tonic triads/arpeggios in root position in Major: C, G, D, A, F, B \flat , E \flat

TIME AND RHYTHM

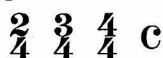
The student should be able to:

- identify notes and rests with their names
- give the number of beats each note will receive
- write counts using numbers
- match notes and rests of the same value
- notate bar lines in the correct position

Rhythms such as:



1. Time Signatures:



2. Note and rest values: whole, dotted half, half, dotted quarter, quarter, eighth



TERMS AND SIGNS (Definitions are on page 226)

pp pianissimo

ff fortissimo

Moderato

a tempo

ritardando, ritard., rit.

< *crescendo, cresc.*

> *decrescendo, decresc.*

diminuendo, dim.

$>$ accent

J tenuto

J articulation

, breath mark

$\boxed{1. \quad 2.}$ 1st and 2nd ending

Da Capo, D.C.

Da Capo al Fine, D.C. al Fine

INSTRUMENTAL KNOWLEDGE REQUIREMENTS

The student should be able to identify his or her instrument and know the key of the instrument.
(See the chart in Level 1, page 21)

EAR-TRAINING REQUIREMENTS

1. Identify Major and Natural Minor scales
2. Identify rhythmic patterns in $\frac{2}{4}$ $\frac{3}{4}$ $\frac{4}{4}$ c
3. Identify if an interval is higher or lower than a given pitch
4. Identify whole steps and half steps
5. Intonation: Identify if a note is flat or sharp
6. Identify a musical phrase between two similar excerpts

SIGHT-READING REQUIREMENTS

The test material will only use eighth, quarter, half, dotted half, or whole notes and rests, and may include *staccato*, *slurs*, and dynamics.

IMPROVISATION REQUIREMENTS (Optional)

Any improvisation assignment from the Improvisation source list may be played during the performance portion of the evaluation. The improvisation should last between 5-30 seconds in length.

REPERTOIRE REQUIREMENT

Number of pieces – two; Memorization is optional. Pieces must be from different musical periods and of contrasting styles. One piece from the Level 2 Repertoire List is required for CM evaluations. The second piece must be at least a level 2 piece or higher, but does not need to be from the syllabus Repertoire Lists.